



AR&PA

IBERIAN CULTURAL HERITAGE BIENNIAL

# YOUTH AND HERITAGE

LEIRIA 14 - 17 OCTOBER 2021

# EXHIBITORS WELCOME PACK



# I. GENERAL INFORMATION

ADDRESS AND SCHEDULES



AR&PA

IBERIAN CULTURAL HERITAGE BIENNIAL 2021

FREE ENTRANCE

## Mercado Sant'Ana

14th to 17th October (Thursday to Sunday)

[WWW.BIENALARPA21.PT](http://WWW.BIENALARPA21.PT)

## EXHIBITION SPACE

Thursday to Saturday from 10h00 to 19h00

Sunday from 10h00 to 16h00

Thursday to Saturday: reception for schools  
from 10h00

Night events: starting at 19h00

All activities follow the schedules stipulated in  
the programs.

Exhibitors can access their space from 9.30am  
and until 7.30pm during the 4 days of the  
event.

# II. LOGISTICS

## ASSEMBLING AND DISASSEMBLING

### ASSEMBLY

13 October, between 13h00 and 18h00

14 October, between 8h30 and 10h00

### DISMANTLING

17 October, from 16.30 until 21.00

The **assembly** of each Exhibitor must be carried out on 13th October (Wednesday) between 13h00 and 18h00, and the Organization undertakes to make the space available in good condition and equipped with the equipment included in the stand purchase package.

**Dismantling** should take place right after the closing of the event, on 17 October (Sunday) at 4pm.

Exhibitors with larger structures that require more time for assembly may request prior authorization from the Organization, which will issue an authorization so that they may go



to the site and carry out the assembly on the 12th of October (Wednesday), at a time to be agreed. Also in these cases, dismantling can be done on the 18th of October until 13h00, being necessary the previous authorization from the Organization.

The Organization is not responsible for structures that remain in the space after the time defined above.

The Exhibitor undertakes not to exceed the maximum electricity power defined and made available by the AR&PA Biental (16 Ampermonophase), prepared for the normal use of mobile phones, computers and plasma screens. It is not possible to exceed this consumption without informing the Organization beforehand.



## TEAMS

Each exhibition stand entitles the Exhibitor to 4 credentials - should the Exhibitor require more credentials, he should previously request them to the Organization.

The Entrances and exits of the exhibition space are made through the main entrance. The Exhibitors and/or suppliers should go to the Information Desk on arrival to collect their badges, which they must use throughout credentials, which they must use throughout the event, to show whenever requested.

Should the exhibiting entity have a team/supplier for assembly and dismantling different from the team that will remain at the stand during the event, we ask that you inform the Organizers of this situation in order to prevent assembly badges being issued. These cards are valid only during the assembly and dismantling hours of the event.

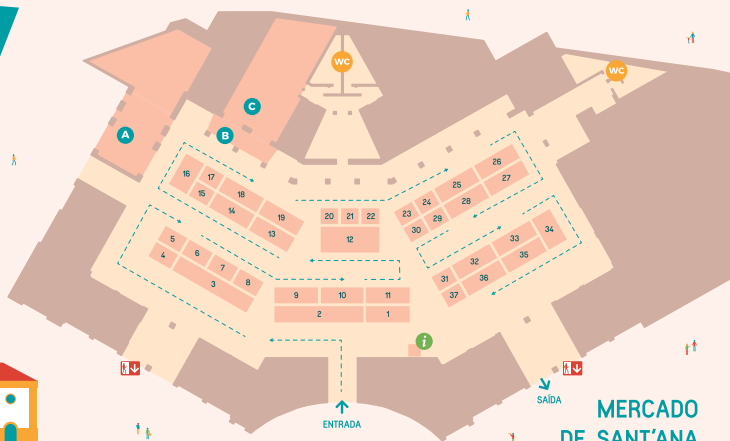
Each Exhibitor is responsible for any accident caused to third parties in the scope of activities carried out by itself, either during the Event, or during assembly and dismantling of the stand.



IBERIAN CULTURAL HERITAGE BIENNIAL

# YOUTH AND HERITAGE

LEIRIA 14 - 17 OCTOBER 2021



MERCADO  
DE SANT'ANA

- 1 Spira - revitalização patrimonial
- 2 Comunidade Intermunicipal da Região de Leiria
- 3 Junta de Castilla y León
- 4 Fundação INATEL
- 5 Instituto Politécnico de Tomar
- 6 In Situ - Conservação de Bens Culturais
- 7 Uffizzi Conservación y Restauración de Bienes Culturales S.L
- 8 Itinerário Cultural "Caminhos da Arte Rupestre Pré-Histórica"
- 9 Turismo Centro de Portugal
- 10 Direcção-Geral do Património Cultural
- 11 Plano Nacional das Artes
- 12 HERIFAIRS: The First European Network of Heritage Fairs / Herit-Us - Interactive Platform for Cultural Access
- 13 Rota do Românico | Porto e Norte

- 14 Museu Marítimo de Ílhavo
- 15 Timelinyf
- 16 POR.OS - Museu Portugal Romano em Sicó
- 17 VRBoxio | Visitas Virtuais 3D, Realidade Virtual | Amplified Creations
- 18 CEARTE - Centro de Formação Profissional para o Artesanato e Património
- 19 Discover Duero Douro
- 20 Pavilhão Mozart - Tracton
- 21 Museu Municipal de Loulé
- 22 UPNORTH - contagem automática de visitantes
- 23 HERIT-US PROYECT
- 24 Europa Criativa Portugal
- 25 MI.MOMO.FARO - Faro 2027 & Município de Faro
- 26 Jardines Históricos Transfronterizos (DARCULTUR)
- 27 Município de Montemor-o-Novo
- 28 Arte Paleolítico Transfronterizo (PALEOARTE)

- 29 Maxical
- 30 MONUMENTO Salzburg
- 31 Galbilec
- 32 Município de Tomar
- 33 Proyecto Terpat Territorio y Patrimonio
- 34 CITCEM - Centro de Investigação Transdisciplinar «Cultura, Espaço e Memória»
- 35 Escola Profissional da Recuperação do Património de Sintra
- 36 Fundação Las Edades del Hombre
- 37 Alvíto, coração do Alentejo

- A Artes & Ofícios
- B Educação Patrimonial
- C Auditório
- i Ponto de Informação

programação em  
bienalarpa21.pt



# III. SIDE ACTIVITIES



## SALES

Should it wish, the Exhibitor may sell products at its stand, with the payment method being its responsibility. The Organization does not guarantee the storage of surplus products after the last day of the Biennial. Any surplus products not collected by the Exhibitors at the end of the event cannot be recovered at a later date.

## INNOVATION POINT

The Innovation Point is an online space dedicated to technical presentations by exhibitors of the AR&PA Biental, through video call in the event's platform, being broadcasted in loco at Mercado Sant'Ana. Interested Exhibitors should register in this space in the Registration Form. All presentations have a maximum duration of 20 minutes.

## YOUTH AND HERITAGE TALKS

Participation in the 3 sessions of the Talks Youth and Heritage is free of charge, subject to **registration** and seat availability. Participation in the Talks is on a first-come, first-served basis.

## PATRIMONIO.PT AWARDS CEREMONY

All Exhibitors are invited to attend the Património.pt Awards Ceremony. The ceremony will take place on October 16th, 19h00, at Teatro José Lúcio da Silva, Leiria.

The Ceremony will be followed by a **buffet dinner**, to which the Organization is pleased to invite 1 representative per Exhibitor/Candidate

## CONTACTS

Spira:

Rua 5 de Outubro, 40-44

7920 – 368 Vila Nova da Baronia

+351 912 902 230/ +351 284 475 205

info@spira.pt

## EXHIBITORS SUPPORT

Raquel Viúla: +351 912 902 230

Joana Brito: +351 917 881 800

bienalarpa@spira.pt

## TECHNICAL ISSUES

Paula Fernandes: +351 910 043 683

## EMERGENCY

**INEM Instituto Nacional de Emergência**

**Médica:** 112

**Saúde 24:** 808 242 424

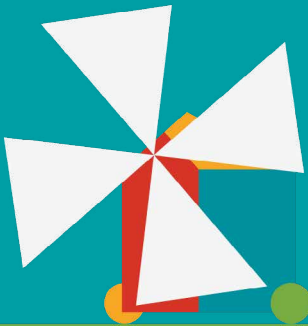
**Urgência Geral da Unidade Hospitalar**

**de Leiria:** 244 817 016

**Urgência Pediátrica:** 244 817 014

**GNR Leiria:** 244 830 150

**Bombeiros Voluntários de Leiria:** 244 882 015



# IV. OTHER INFORMATION

The Exhibitor undertakes to be present at the AR&PA Bienal in compliance with all the requirements set out in the “I’d Like to Hire a Stand” brochure throughout the entire exhibition timetable, and declaring that he has taken note of this document.

The Organization guarantees night-time surveillance of the space after the event’s opening hours. There will be a storage room for exhibitors. However, the Organization cannot be held responsible for any damage or theft of Exhibitors’ material/equipment.

The Exhibitor undertakes to make exclusive use of the space provided, which may not be shared on any occasion, except in a situation previously approved by the Organization.

To those exhibitors who have audiovisual equipment, the Exhibitor undertakes to present

the digital contents in it. The Organizers request and encourage Exhibitors to gather contents of the highest possible quality for the benefit of the Exhibitor itself and of the whole AR&PA Biennial. However, and for the greater convenience of all Exhibitors and visitors, the sound of the equipment should be kept at a constant volume and may be controlled by the Organizers so as not to disturb the visit and movement of visitors and other exhibitors. Therefore, contents that can be understood by the visitor, even without sound, should be selected.





AR&amp;PA

IBERIAN CULTURAL HERITAGE BIENNIAL

# YOUTH AND HERITAGE

LEIRIA 14 - 17 OCTOBER 2021



## RESTAURANTS

### **A Toca**

R. Dr. Correia Mateus 46,  
2400-137 Leiria

### **O Manel**

R. Dr. Correia Mateus 50,  
2400-137 Leiria

### **Ao Largo**

R. Dr. Correia Mateus 36,  
2400-137 Leiria

### **Montecarlo Salvador**

R. Dr. Correia Mateus 38,  
2400-137 Leiria

### **Vista Bistrô & Restaurante**

R. Ten. Valadim n°5,  
2410-190 Leiria

### **Taberna Ibérica**

Praça Francisco Rodrigues Lobo,  
2400-080 Leiria



## ACCOMMODATION

The Organization has signed a protocol with some hotels in Leiria for the accommodation of the Biennial exhibitors with special conditions.

### **Hotel São Luís**

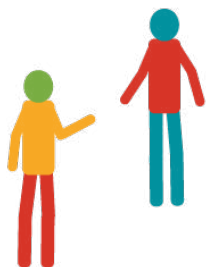
Single APA 40,00 € per room and per night  
Twin APA 50,00 € per room and per night  
Tripla APA 70,00 € per room and per night  
Reservations directly through [hotelsluis@gmail.com](mailto:hotelsluis@gmail.com) explaining your participation as an exhibitor at AR&PA 2021

### **Hotel Eurosol Residence 4\***

Single APA 59,00 € per room and per night  
Twin APA 69,00 € per room and per night  
Duplo APA 79,00 € per room and per night  
Through the website [www.eurosol.pt](http://www.eurosol.pt), indicating the promotional code 21 ARPA.

### **Hotel Eurosol Leiria 3\***

Single APA 49,00 € per room and per night  
Twin APA 59,00 € per room and per night  
Duplo APA 69,00 € per room and per night  
Through the website [www.eurosol.pt](http://www.eurosol.pt), indicating the promotional code 21 ARPA.



## PARKING

Exhibitors may park their cars in the car parks located around the venue, as identified below:

- Parking Fonte Luminosa
- Parking Mercado de Sant'Ana
- Parking D. Dinis
- Parking Avenida Cidade de Maringá
- Parking Estádio Municipal de Leiria
- Parking Santo Agostinho





IBERIAN CULTURAL HERITAGE BIENNIAL

# YOUTH AND HERITAGE

LEIRIA 14 - 17 OCTOBER 2021

PROMOTER



PROJECT BY



SPANISH PROMOTER



PREMIUM PARTNER



INSTITUTIONAL SUPPORT



INSTITUTIONAL PARTNERS



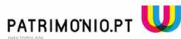
HERIFAIRS MEMBER



CO-FINANCED BY



MEDIA PARTNERS



[WWW.BIENALARPA21.PT](http://WWW.BIENALARPA21.PT)

BIENALARPA21.PT

